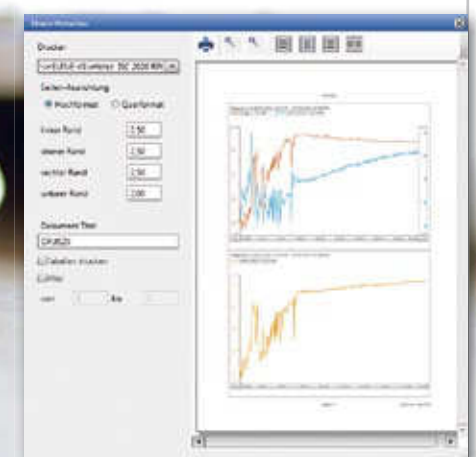
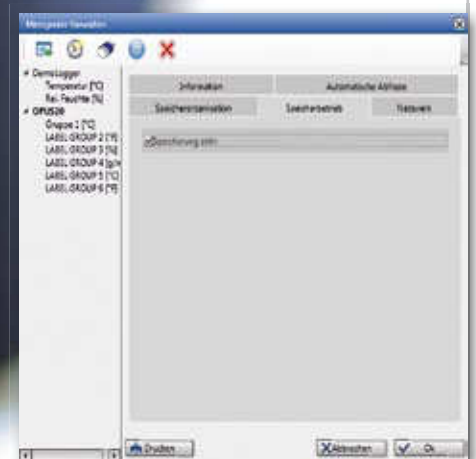


When it comes to evaluation, have the works!

With the aid of powerful software, hand-held measuring devices are turning into archives.

Smart-Graph3



Software SmartGraph3 for Lufft Hand-held Devices and OPUS20-Series



Representation and Evaluation

SmartGraph3 for OPUS20-Series

■ An OPUS20 datalogger is automatically recognised and added as a “network device”.

■ In addition to its data-readout function, the software possesses a recording mode that enables parallel recording to be displayed on the computer.

■ The data from any desired number of OPUS20 devices can be read out simultaneously.

■ The zoom function allows for quick analysis of critical time periods.

■ The exporting of measured data in csv format enables it to be imported into Excel.

■ The device configuration can be printed out in order to check installation parameters.

■ Alarm limits – like the measured data – are chronologically managed at various times so that when changes in alarm limits occur, they can be retraced.

■ Automatic data readout of all measured data is supported.

SmartGraph3 for Hand-held Measuring Devices

■ A Lufft hand-held measuring device is automatically recognised and added by means of a USB interface.

■ In addition to its data-readout function, the software possesses a recording mode that enables parallel recording to be displayed on the computer.

■ The zoom function allows for quick analysis of critical time periods.

■ The exporting of measured data in csv format enables it to be imported into Excel.

■ Different measurement campaigns are archived in their respective accounts.

■ All measurements recorded by the hand-held measuring device (also calculated values) are transferred to SmartGraph3.

